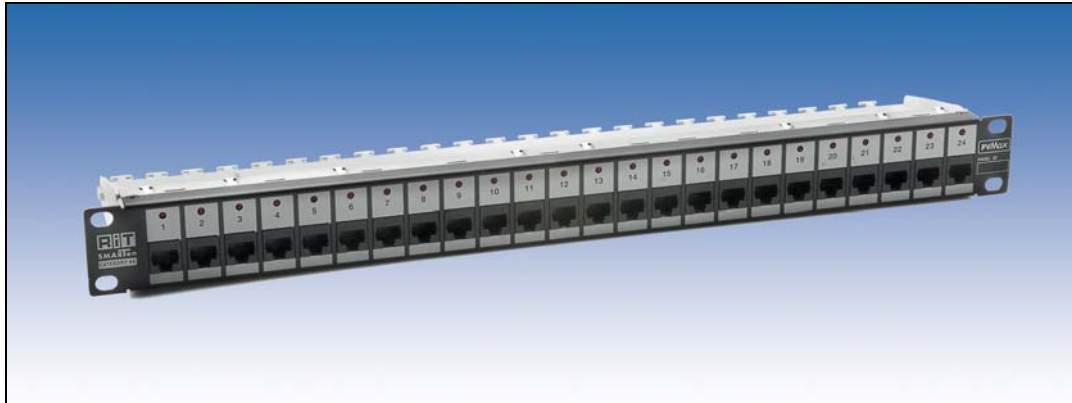


SMARTen 24 UTP Patch Panels

Features

SMARTen
WARRANTY

6A



- High density, 24 ports per 1U
- High performance, supportable bandwidth up to 500MHz supporting IEEE 802.3an 10Gbps application
- Special cap design for minimizing Alien Cross-Talk
- Conform to ANSI/TIA/EIA-568-B.2-10, ISO/IEC 11801 2.1 edition and CENELEC EN50173 (200x) for Category 6A/CLASS E_A
- Simple labor-saving termination using standard 110 & Krone Block termination tools
- Enhanced cable retention fixture
- Backward compatible with Category 5e and Category 6 cabling standards
- Supports solid and stranded 22-26 AWG wires
- PatchView and non-PatchView options

SMARTen 24 UTP Patch Panels

Features



SMARTen™

RiT SMARTen UTP Patch Panels are part of the RiT SMARTen Cabling System™, featuring Category 6A performance. The system is designed to conform to ANSI/TIA/EIA-568-B.2-10, ISO/IEC 11801 2.1 edition and CENELEC EN50173 (200x) for Category 6A/CLASS E_A.

The system is designed to support protocols running at up to IEEE 802.3an 10Gbps, 1000 Mbps, such as ATM 622 Mbps and Gigabit Ethernet.

PatchView™ Capability

Special SMARTen UTP 24 Patch Panels models, when used in conjunction with RiT's PatchView Solution, are able to provide valuable connectivity information about the entire network to the PV4E management software.

LED indicators on panels identify any two ports patched together and enable 100% accurate Moves, Adds and Changes.

With its unique automated detection, LED-guided connection, and web-based remote maintenance capabilities, the system enables real-time, centralized management and troubleshooting for even the most dispersed networks.

SMARTen 24 UTP Patch Panels

Description



The RiT SMARTen UTP data communications patch panels meets the requirements for high-performance Category 6A networks for 10 Giga applications. The panels conform to ANSI/TIA/EIA-568-B.2-10, ISO/IEC 11801 2.1 edition and CENELEC EN50173 (200x) for Category 6A/CLASS E_A. The system is designed to support protocols running at up to IEEE 802.3an 10Gbps, 1000 Mbps, such as ATM 622 Mbps and Gigabit Ethernet and future high-speed applications.

The panels are optimized for ease of assembly and termination. With simple labor-saving termination using standard 110 & Krone Block termination tools and color-coded wiring blocks, installation costs are significantly reduced.

By using RiT's special cap design for minimizing Alien Cross-Talk the panel exceeds the crucial parameter for 10G application – Alien Cross-Talk.

Special SMARTen UTP models, when used in conjunction with RiT's PatchView system, are able to perform remote or on-site scanning of the patching configuration. The entire wiring center's patching configuration is continuously monitored by a Scanner which reports the data to a remote terminal. The network administrator uses this data as a vital part of his cabling management system. The data may be displayed on the panel itself by LED indicators.

Servicing time is dramatically reduced as computerized LED displays guide the technician when performing Moves, Adds and Changes (MACs).

SMARTen 24 UTP Patch Panels

Specifications



Interface

- **Front Interconnection (patch cord side)**
24 eight-position or nine-position RJ-45 unshielded modular jacks. Use of RiT SMARTen patch cords is recommended due to AXT requirements.
- **Back Interconnection (cabling side)**
24 eight-position 110 & Krone tool-compatible blocks; accept 22 to 26 AWG wires, solid or stranded. Rated for up to a minimum of 200 re-termination

Note: Termination tools must be ordered separately.

- **Interconnection to RiT's PatchView system**

PVMax Panels – One 14-pin header on the back of the panel is used for connection to the PVMax Scanner.

Select Group B Scanner Attachment Cord according to the required length.

The scanning signal is transmitted over pin 9 of the RJ-45. Pin 9 exists in nine-position RJ-45 jack, used for these patch panel models. A special patch cord - Jumper, including an extra wire and RJ-45 plugs with pin 9 is needed. Please refer to the PatchView System and the Copper Cables and Cords sections for further details.

- **Indicators (in models adapted to PatchView only)**
Port identification indicators - 24 red LEDs. Connected ports are identified by a pair of activated LEDs. A single port can be identified and the corresponding LED activated by a remote control command from the network management station.

SMARTen 24 UTP Patch Panels

Specifications



Electrical Specifications

General

Height:	44.0 mm / 1.75" (1U)
Width:	482.6 mm / 19"
Depth:	35.0 mm / 1.375"
Depth with Cable	
Retention Fixture:	91.0 mm / 35.8"
Weight:	0.46 kg (1.0 lb)

■ **Material**

Aluminum

■ **Colors**

Black background with gray silk screened markings

■ **Environment**

Temperature: -10° to 60°C

Humidity: 0-90% non-condensing

■ **Compliance with International EMC Standards:**

The SMARTen UTP patch panels is designed to comply with EN-55022, Class B (Europe) and FCC Part 15, Subpart J, Class A (USA).