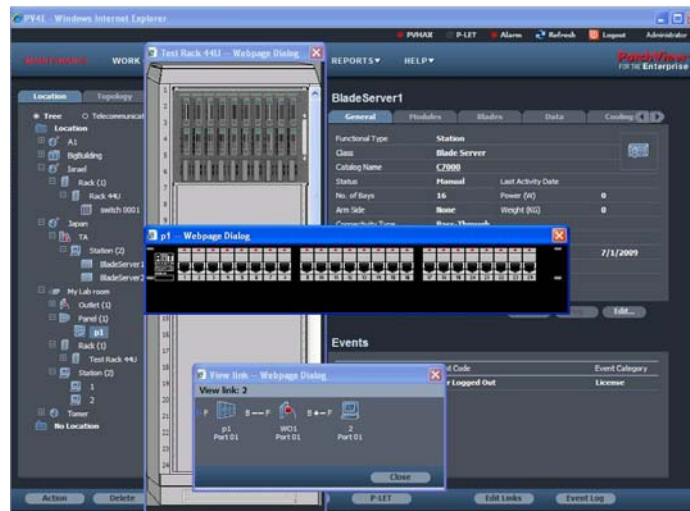


PV4E Management Software

Features



PV4E is a field proven comprehensive solution for real-time control over network infrastructure and devices

- The new and refreshed Graphic User Interface (GUI) is now even more attractive, and delivers improved usability
- Enables automatic discovery of all network devices and their attributes, and places them in their correct physical location tracing end-to-end network connectivity
- Added support for Blade Server technologies
- Speeds up and simplifies site planning and daily network provisioning, maintenance and security and presents comprehensive visibility to the datacenter and work space facilities
- Automated Provisioning - enables you to assign system resources and services in a fully automated environment and has been designed to automate and significantly improve the planning and provisioning process for data centers and work space environments. RiT's Automated Provisioning solution includes the following:
 - Full support of Move, Add, Change, Swap, & Remove operations
 - Move and Add requests can also be performed per specific port
 - Policy based cabinet selection for equipment Add operation
 - Intelligent Power systems support
 - Space and weight considerations support
 - User defined tasks can be added to the automatic work order

- Device Authorization (connection-based security and authentication)
 - Significantly enhances the system's security support functionality, including:
 - Enhanced application security (password and community strings encryption)
 - Creation of an Event when an unauthorized device is detected
 - Support of various security levels per location
 - Easy authorization for new devices
- Incident Management
 - Enhanced fault information
 - Real-time alerts
 - Effective troubleshooting tools
- Inactive Device Module
 - PV4E flexibly allows a per device status transition from activation to dormant and decommissioned statuses enabling appropriate treatment of each life cycle stage.
- Active Directory Integration
 - PV4E user authentication can be performed against the organization's active directory or the PV4E local database
- Telecommunication Infrastructure
 - Support, document and management of the passive telecommunication infrastructure. For example, copper and fiber cables and telecommunication conduits
- SitePro
 - SitePro software, installed on a hand-held device, guides users through their specific tasks, stores and displays extensive information, and facilitates automated management and provisioning operations. It allows multiple technicians to work simultaneously in the data centre or communication room
 - Selection and view events in real-time using pop-up messages. Events can also be sent via email
 - Full device search capabilities
- The PV4E CAD Module
 - This integration allows users to manage PatchView inventory items on a location map using standard Geographic Information System (GIS) operations
 - The CAD module can now be opened as a separate window

- Discovery Module (P-LET)
 - A software-based, network mapping module. Discovers all active devices on the network and maps them with their location and link information
- SDK
 - The PV4E Software Development Kit (SDK) has been designed to enable customers and integrators to utilize the PV4E engine and implement its fully automated provisioning capabilities throughout their networks

Complementary Products

- SiteBuilder
 - An Excel based set of utilities that enables upload of inventory and catalog data into PatchView and SiteWiz and provides the ability to edit various types of information in these systems. SiteBuilder contains several separate utilities. Each utility has been designed to upload different types of information.
- Report Center
 - A report creation, generation and management tool that provides a central access point for reports and queries for RiT's PatchView and SiteWiz solutions.
- Dashboard
 - Provides a centralized view of key performance indicators and monitoring events across a company's physical network infrastructure.
 - Consolidates on-site security, provisioning, and troubleshooting events by providing customized definition, tracking and automated notifications.

PV4E Management Software

Description

PV4E Management Software is all you need to simplify your network planning, implementation and operational activities, for example, Moves, Adds and Changes (MACs). PV4E will significantly expedite daily provisioning, maintenance and security tasks while giving you full control of your network assets in real-time.

PV4E provides fully accurate and comprehensive documentation of all network infrastructure components as well as advanced detection and alert capabilities to allow the user full control over the environment.

In addition, PV4E is the definitive automated solution for datacenters, server/communication rooms and people workspace facilities. Its automatic capabilities guarantee the detection of changes or faults in your network in real-time and alerts you accordingly. PatchView is an external solution to the communication network and does not interfere or interact with actual network traffic.

PV4E also brings cable management capabilities that can help you better utilize your connectivity infrastructure.

PV4E Management Software

Specifications

Deployment Server

Group	Component	Minimum Requirement
Hardware	Pentium IV	Running at 2.4GHz or greater. For large installations, the computer configuration is determined separately
	RAM	2GB
	Hard Disk space	2GB. An additional 30GB is recommended for logging purposes.
Software	Operating System	Windows 2003 Server R2 SP2, Windows 2003 server SP2 and Windows 2008
	Microsoft Internet Explorer	6.0 SP 1 IE 7/8
	DB	MS SQL 2005 Standard/Enterprise (basic, SP2 and SP3) MS SQL 2008 – all versions (SP1)
	IIS 5 or 6	Prerequisites: FTP Server, SMTP Services
	MSMQ	Version 2.0 or 3.0 or higher



Client

<i>Group</i>	<i>Component</i>	<i>Minimum Requirements</i>
<i>Hardware</i>	<i>CPU</i>	<i>Pentium IV</i>
	<i>RAM</i>	<i>1GB</i>
<i>Software</i>	<i>Operating System</i>	<i>Microsoft Windows XP SP2/SP3, Vista, 2003 server, 2008 server</i>
	<i>Internet Explorer</i>	<i>6.0 SP1 or IE 7 or IE 8 with ActiveX, Cookie and Java Script support</i>

- Report Center Requirements: Crystal Reports 11.5 or 11.0
- CAD Module requirements: Autodesk MapGuide server release 6.5