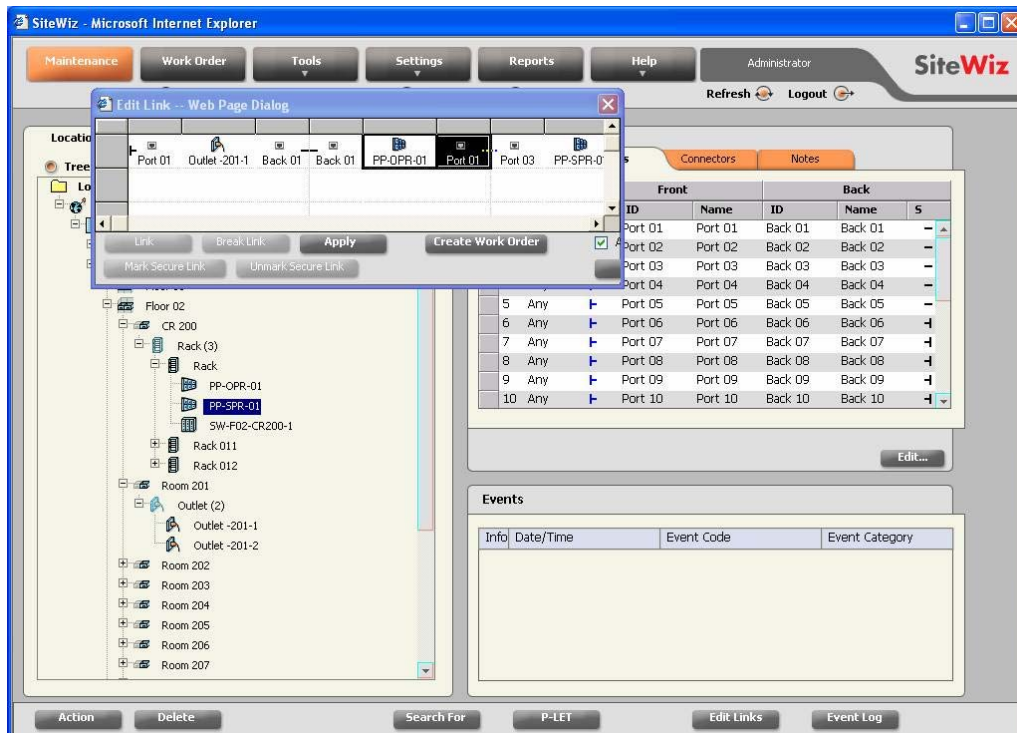


SiteWiz

Features



SiteWiz unique discovery module tracks network connectivity from the Terminal Equipment (PCs, telephones, IP phone, printers etc.) through the Physical Connectivity Component (patch panels and cables) to the Network Equipment (LAN switches, PBXs, Hubs etc).

Features include:

- Automatic network topology discovery
- Automatic network devices discovery
- Controlled work order process
- A software application for hand-held devices (PDAs) that guides the user with Work Order implementation
- Automated provisioning
- Graphic representation of cabinets, racks, devices and panels
- Support for PBX connectivity

- IP telephony support
- Asset management
- Enhanced database searching mechanism
- Reporting system with out of the box reports and ability to generate user defined reports
- Switch traps' detection
- Graphic representation of physical infrastructure connections and components
- Cable test results
- Import/export utilities, including Excel based utility for mass data upload
- Location access permissions
- Device authorization
- Interconnect support
- SiteWiz software developer kit (SDK)
- Seamlessly integrates with the full range of help desk, network management and asset management tools including: CA Unicenter, HP OpenView NNM and IBM Tivoli NetView
- Telecommunication Infrastructure support
- IP Phone Discovery
- Hub/WAP/Access Point Support
- Support for Multi NIC Server Consolidation
- Provisioning Feature

SiteWiz

Description

SiteWiz™ is RiT's powerful CAM software solution for today's diversified networks. It provides the accurate documentation and precise status monitoring you need to efficiently plan, manage, provision and maintain all aspects of the physical layer. Its unique, field-proven features help you improve IP asset management and network utilization, automate and de-skill daily operations and ensure data sharing across departments.

SiteWiz

Specifications

Deployment Server

Group	Component	Minimum Requirement
Hardware	Pentium IV	Running at 2.4GHz or greater (for large installations, the computer configuration should be determined separately)
	RAM	2GB recommended
	Hard Disk space	2 GB
Software	Operating System	Windows 2003 Server with SP1, Windows 2000 Server with SP4
	Microsoft Internet Explorer	6.0 SP 1 or IE 7
	DB	MS SQL 2000 Standard/Enterprise + SP4 or MS SQL 2005 with SP1
	IIS 5 or 6	Prerequisites: FTP Server, SMTP Services
	MSMQ	Version 2.0 or 3.0 or higher

SiteWiz

Specifications

Client Requirements

Group	Component	Minimum Requirements
Hardware	P-III 900 MHz	Running at 900MHz (P-IV recommended).
	RAM	512MB
Software	Operating System	Microsoft Windows 2000 or Windows XP SP2
	Internet Explorer	6.0 SP1 or IE 7 with ActiveX, Cookie and Java Script support